

Compact, High-Performance AI Powerhouse

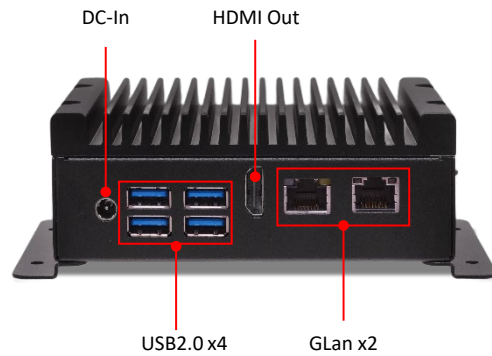
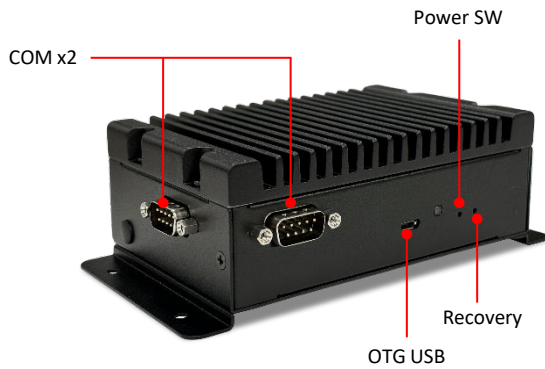
TOPS 70~100 | Edge AI IPC | Fanless & No Venting Hole

DEV2715

The DEV2715 is an ultra-compact, fanless Edge AI IPC featuring the NVIDIA Jetson Orin N platform, delivering up to 70/100 TOPS of computational power. With 8GB or 16GB of memory and various I/O interfaces (dual LAN, 4 USB ports, digital I/O, and a SIM card slot), it ensures robust connectivity. By processing data locally, it reduces latency, enhances decision-making, and improves data privacy and security, making it ideal for smart cities, healthcare, and intelligent infrastructure.

- Embedded with NVIDIA Jetson Orin NX 8GB/16GB and Nano 4GB/8GB
- Up to 70/100 TOPS
- Ultra compact with fanless design
- Rich I/Os as Lanz2, USBx4, DIOx4bits, and SIMx1

DEV2715



Model name		DEV2715
Color		Black
Dimensions	W x H x D (mm)	125 x 45 x 85 mm
	W x H x D (inch)	4.92 x 1.77 x 3.35 inch
Weight	Net Weight	0.64 kgs / 1.41 lbs
	Gross Weight	0.94 kgs / 2.07 lbs
CPU	Type	NVIDIA Jetson Orin NX 8GB/16GB TDP 10~20W (8GB) TDP 10~25W (16GB), and NVIDIA Jetson Orin Nano 4GB/8GB TDP 7~10W (4GB) TDP 7~15W (8GB)
Memory	Type	ONX 16GB, 128bit LPDDR5 ONX 8GB, 128bit LPDDR5 ONano 8GB, 128bit LPDDR5 ONnao 4GB, 128bit LPDDR5
Expansion slot		M.2 slot x1, 2242 (key B for LTE/PCle SSD) M.2 slot x1, 2230 (key E for wifi)
LAN	Chip	Nvidia/Intel
	Speed	100 / 1000 Mbps
Storage	2.5" Bay	-
	M.2 SSD	X 2

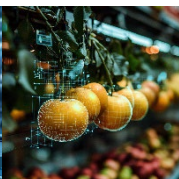
System I/O	DC Input	X 1 (12~20V)
	HDMI Port	X 1 (HDMI 2.1)
	USB Port	X4 (USB3.2) Type A connectors
	Gbe LAN	X2
	eSATA Port	-
	Antenna Holes	X 2
	Kensington Lock Hole	-
	Others	4bit Isolate DIO-2 In/2 out x1, RS485x1, RS232x1, CAN port x1, SIM slot x1, Recovery button x1, Power button x1
Watchdog Timer		1 ~ 255 sec/min
TPM		2.0
Power Supply		90W(19V, 4.74A) AC Adapter
Input Voltage		AC 100 ~ 240V
Warranty		2 Years
Operating Temperature		25W TDP model: -20 ~ 45°C (-4 ~ 113°F) 15W TDP model: -20 ~ 55°C (-4 ~ 131°F)
Storage Temperature		-30 ~ 60°C (-22 ~ 140°F)
Relative Humidity		90% RH (45°C non-Condensing)

*Please note that product specifications are subject to change without notice

Applications



Smart Factory



Smart Robot



Smart Security



Smart Transportation



AOPEN Headquarter
New Taipei City,
Taiwan

AOPEN America
San Jose,
USA

AOPEN Europe
Rosmalen,
Netherland

AOPEN Australia
Melbourne,
Australia

AOPEN Japan
Tokyo,
Japan

AOPEN China
Shanghai,
China

v1.0